



**Leicester, Leicestershire  
and Rutland**

# LLR Immunisation Programme Campaign Update:

## Health Overview & Scrutiny Committee

**September 2024**

NHS Leicester, Leicestershire and Rutland is the operating name of  
Leicester, Leicestershire and Rutland Integrated Care Board



A proud partner in the:

**Leicester, Leicestershire  
and Rutland**  
Health and Wellbeing Partnership

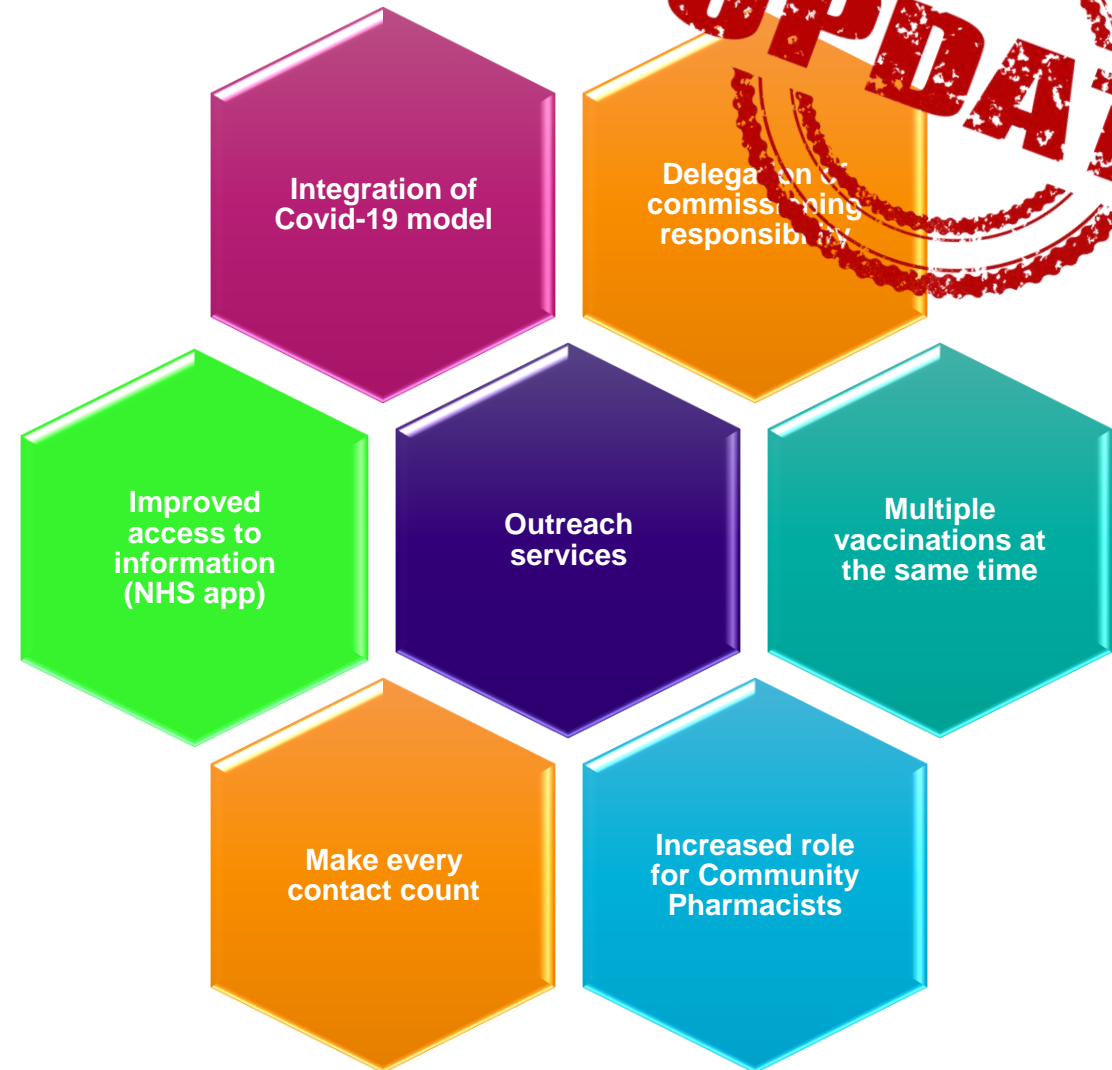
# National Vaccination Strategy

Published December 2023: [NHS Vaccination Strategy](#)

The strategy aims to:

1. Build on the success of the NHS COVID-19 vaccination programme
2. Increase overall uptake and coverage of vaccinations (life-course, seasonal programmes and outbreaks)
3. Reduce disparity in uptake, so that every community in the country has the protection it needs.

**\*Delegation of commissioning responsibilities to ICB, delayed until April 2026\***

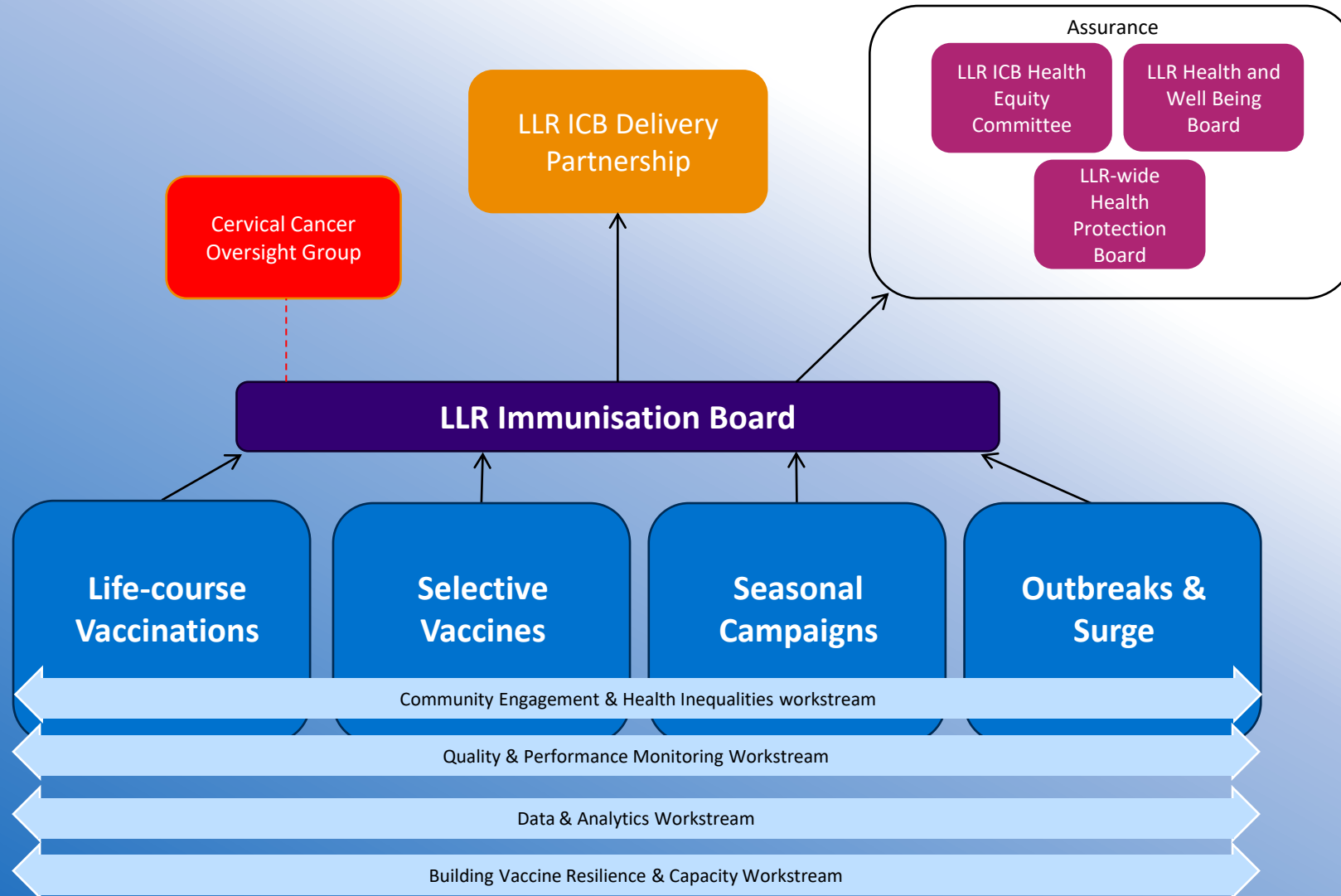


# LLR Immunisation Priorities



Priority	Progress @ August 2024
<b>1. Deliver National Vaccination Strategy</b>	New local governance structure now up and running Delegation moved to April 2026. New governance being established by NHSE to manage transition Working with NHSE colleagues to agree a transition plan specific for LLR.
<b>2. Tackle Health Inequalities</b>	Undertaking procurement exercise with NHS England to secure access and inequalities funding for the remainder of this year
<b>3. Improve Maternity, Childhood &amp; Adolescent vaccine uptake</b>	Childhood immunisation one of three priority areas for CQC <ul style="list-style-type: none"> <li>• Improvement focus: Improving Maternity, Childhood and Adolescent Immunisation Group, feeds intelligence to the General Practice Assurance &amp; Improvement Group</li> <li>• Practices with large waiting lists identified, individual meetings being held with support for primary care: new CHIS provider, super vaccinators, promotional material, RHU over the summer to provide additional capacity</li> <li>• Self-assessment improvement tool for childhood immunisation available for practices</li> </ul> HPV Project Group set up to improve uptake – part of cervical cancer elimination strategy
<b>4. Implement Covid-19, Flu &amp; other seasonal vaccines</b>	Achieved 55.5% uptake in Spring / Summer campaign. Plans progressing to start AW24/5 campaign in October 2024.
<b>5. Respond effectively in surge &amp; outbreaks</b>	Measles Incident Management Team now stood down. Pertussis Incident Management Team, Chaired by County Director of Public Health established to monitor cases and agree mitigation plans.
<b>6. Roll out new vaccines</b>	RSV plans developing ready for 1 <sup>st</sup> September - hybrid delivery model for pregnant women. Primary care plus Roving Healthcare Unit for older adults (and available for pregnant women is required).

# LLR Immunisation Governance Structure



# Procurement of 'Health Inequalities Hub' provider

- Current services include Roving Healthcare Units, Central Booking Team, Super Vaccinators, Vaccine Management
- Aim is to procure long-term service from April 2025 for 3-5 years
- Our vision is to create an **integrated prevention service** that offers a flexible and adaptable approach with the **primary aim of increasing immunisation coverage** but also supporting **wider health promotion priorities** for the LLR population. To include:
  - **Outreach services** that offer vaccination in convenient locations such as shopping centres, supermarkets and community locations.
  - Delivery of **targeted interventions for underserved populations**, using innovative approaches that enable people to make informed decisions about vaccination.
  - Provide **multiple vaccinations for the whole family** i.e. covid and flu alongside opportunistic HPV or childhood vaccines like MMR and Pertussis.
  - Include a **wider service offer of health promotion and other services** (i.e. screening services), to make every contact count.
  - Deliver **vaccines in patient's homes** (including care homes) where it isn't possible for the patient's GP to do so.
  - Able to **step-up and be innovative**, by testing, creating and delivering interventions that improve access to vaccination and other prevention services.
- Vision has been developed with System partners – feedback and views are very welcome!



# COVID-19, Flu & RSV

# COVID-19 & flu vaccination uptake AW 2023/24: Closing figures

LLR AW 2022/23 COVID-19 closing uptake: 61.3%

Location / COVID-19	Booster eligible population	Booster doses given to eligible population	% Booster doses given
<b>LLR</b>	<b>398,742</b>	<b>219,612</b>	<b>52.0%</b>
Rutland	17,214	12,026	66.5%
City	121,072	46,263	36.6%
County	260,432	151,772	58.3%

23

LLR AW 2022/23 Flu closing uptake: 53.4%

Location / Flu	Booster eligible population	Booster doses given to eligible population	% Booster doses given
<b>LLR</b>	<b>650,431</b>	<b>325,964</b>	<b>50.1%</b>
Rutland	25,126	16,596	66.1%
City	225,548	87,449	38.8%
County	399,730	221,918	56.5%

(Source: Foundry)

# COVID-19 Seasonal Vaccination Campaign: Autumn/Winter 2024/25

## Cohorts for COVID-19 from 3<sup>rd</sup> October to 20<sup>th</sup> December 2024\*:

- adults aged 65 years and over
- residents in a care home for older adults & their staff
- individuals aged 6 months to 64 years in a clinical risk group ([as defined in tables 3 or 4 in the COVID-19 chapter of the Green Book](#)). Pregnant women are included in the clinical risk group
- Frontline health & social care professionals.

\*Outreach activities to continue to be delivered to underserved communities until 31<sup>st</sup> January 2025

National Booking Service (NBS) will go live for patients from 23<sup>rd</sup> September. Last NBS appointment date will be 20<sup>th</sup> December for both flu & COVID-19.

Vaccinations available from: Most GPs and community pharmacists, Roving Healthcare Units, Leicester Royal Infirmary (LRI) & Leicester General Hospital (LGH)



24

[NHSE letter on the A/W 2024/25 seasonal vaccination programmes](#)



# Flu Seasonal Campaign 2024/25

## Cohorts for flu from 1<sup>st</sup> September 2024 to 31<sup>st</sup> March 2025:

- pregnant women
- children aged 2 or 3 on 31<sup>st</sup> August
- primary school aged children (reception to year 6) via SAIS from 23 Sept to 13 Dec
- secondary school aged children (years 7 to 11) via SAIS from 23 Sept to 13 Dec
- all children in clinical risk groups aged from 6 months to less than 18 years

[NHSE letter on the A/W 2024/25 seasonal vaccination programmes](#)

## Cohorts for flu from 3<sup>rd</sup> October 2024 to 31<sup>st</sup> March 2025:

- adults aged 65 years and over
- adults aged 18 years to under 65 years in clinical risk groups (as defined by the [Green Book, Influenza Chapter 19](#))
- residents in long-stay residential care homes
- carers in receipt of carer's allowance, or those who are the main carer of an elderly or disabled person
- close contacts of immunocompromised individuals
- frontline health and social care workers

## Vaccinations available from:

Some GPs and community pharmacists, LRI & LGH and from roving vaccination units (no appointment necessary)

NBS open for patients from 23<sup>rd</sup> September. Last NBS appointment date will be 20<sup>th</sup> December for both flu & COVID-19.

# Respiratory Syncytial Virus (RSV) Vaccination Campaign

## RSV campaign timings:

- From 1<sup>st</sup> September to 31<sup>st</sup> August for older adults
- Continuous for pregnant women from 1<sup>st</sup> September

[NHSE letter on the A/W 2024/25 seasonal vaccination programmes](#)

## Cohorts for RSV:

- Pregnant women from 28 weeks of pregnancy to birth
- Older adults aged 75 to 79 years

## Vaccination availability:

- Pregnant women: LRI & LGH antenatal clinics and their own GP
- Older adults: from their own GP
- RSV to be offered as walk-in vaccination from roving healthcare unit – location details to be confirmed

## LRI & LGH:

- Monday to Friday from 9am to 5pm outside antenatal dept

## Community hospital locations from 1<sup>st</sup> Oct (TO BE CONFIRMED)

- Week 1: Coalville on Monday; Melton on Thursday & Hinckley on Friday
- Week 2: Loughborough on Tuesday & St Lukes (Harborough) on Thursday

**Co-administration of RSV vaccine with other adult vaccines, including flu, COVID, pneumococcal, Tdap & shingles is allowed & acceptable.**



# MMR & Measles

# MMR / Measles Update

(Source: UKHSA 05/08/2024)

## Data from 1 September to 5 August 2024

Location	Confirmed Measles Cases	Probable Measles Cases	Total Confirmed Cases
LLR	138	28	166
Rutland	1	0	1
City	128	22	147
County	11	6	17

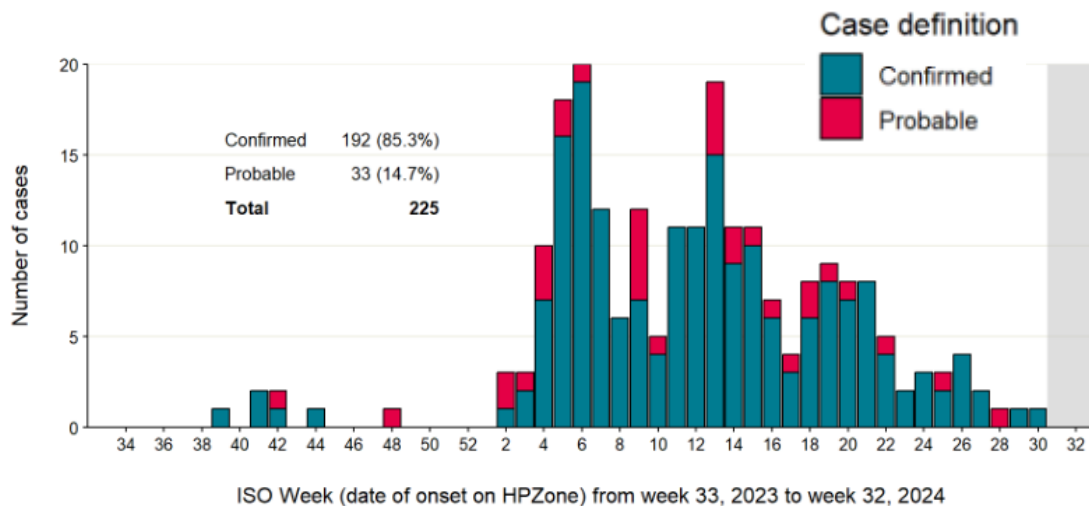
## Varicella

Confirmation that MMR is planned to change to MMRV from autumn 2025 but spending review awaited before final sign-off.

Unclear whether MMR will still exist beyond introduction of MMRV.

Unclear whether change to 12/12 and 18/12 timeline will be introduced alongside new vaccine.

28



## MMR Data from Cover Report Jan to March

Location	24 Month MMR 1	5 Years MMR 2
Rutland	94.6%	94.4%
City	86.3%	79.9%
County	94.8%	91.9%

**No new confirmed measles cases in LLR since 5 August**



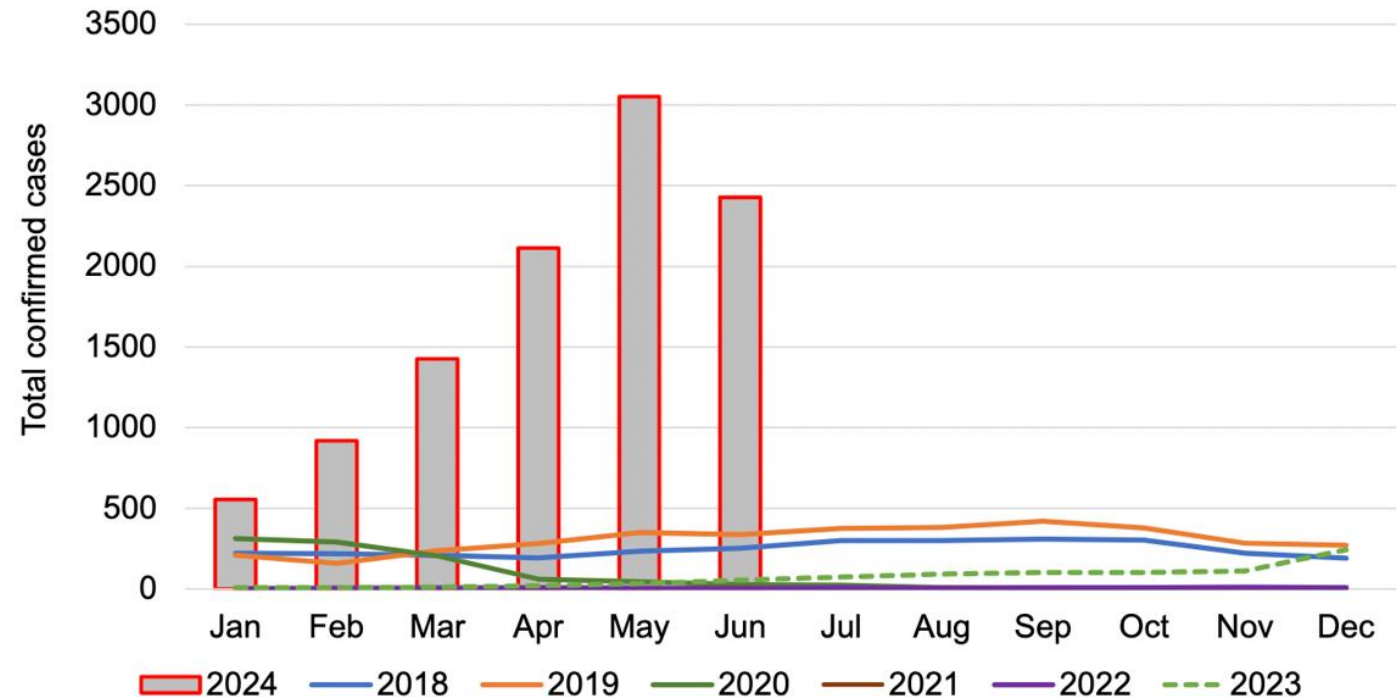
# Pertussis

# Pertussis: Confirmed Cases

Confirmed cases of pertussis in England by month, to end May 2024. In England, provisionally there were 7,599 laboratory confirmed cases of pertussis reported to the UK Health Security Agency (UKHSA) between January and May 2024 with 555 cases in January 2024 increasing to 2,591 in May.

This compares with 858 (provisional) laboratory confirmed cases of pertussis reported throughout 2023. There have been 9 reported deaths in infants who developed pertussis between January and June 2024.

**Figure 1. Laboratory confirmed cases of pertussis by month in England: 2018 to June 2024 (note 1)**



(Source: UKHSA 21 July 2024)

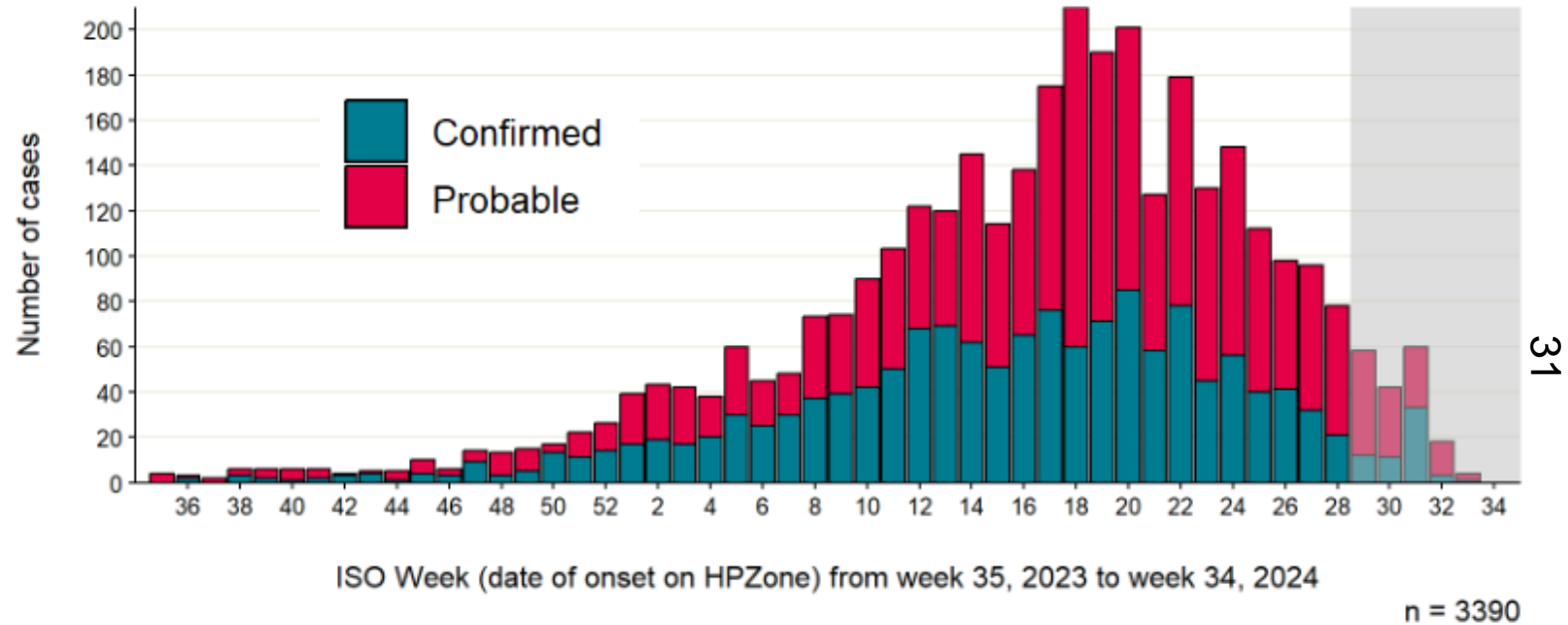
# Pertussis: Confirmed Cases

Cases from 1<sup>st</sup> Oct 2023 to 22<sup>nd</sup> August 2024

Area	Confirmed	Suspected
City	38	74
County	180	218
Rutland	3	13

(Source: UKHSA 24/08/2024)

Trend of cases of **pertussis** being reported to UKHSA in the East Midlands is stable & more recent cases are in the older age group categories i.e. 15 years & over.



Maternal Pertussis Vaccination Uptake	2020-21	2021-22	2022-23	2023-24	Q4 2024/25
LLR	68%	66%	58%	57%	59.3%
National	68%	65%	61%	58%	59.4%

(Source: NHSE COVER 2024)

# Pertussis Vaccine Uptake

Pertussis Vaccination Uptake (Pregnant Women)	January 2024	February 2024	March 2024
West Leicestershire CCG	69.7%	65.7%	64.2%
Leicester City CCG	49.2%	45.5%	45.6%
East Leicestershire & Rutland CCG	66.5%	70.8%	64.5%
LLR	60.9%	60.3%	56.8%
National	59.8%	58.9%	58.9%

**Note:** Pertussis vaccinations are now available opportunistically from the Roving Healthcare Units

(Source: Cover 11/07/2024)

## Childhood Pertussis Vaccination

KEY	Above achievable standard 95%	Between 90 -95%	Below acceptable standard <90%
-----	-------------------------------	-----------------	--------------------------------

Age	Vaccination	England	Leics City	Leicestershire	Rutland
12 Months	DTaP / IPV / Hib %	91.1%	90.3%	94.8%	97.6%
24 Months	DTaP / IPV / Hib3 %	92.5%	91.7%	96.6%	94.6%
5 Years	DTaP / IPV / Booster	83.6%	77.1%	90.9%	93.3%



# Roving Healthcare Unit Offering Walk-in Vaccinations

Date	Walk-in Vaccination Locations Available From Roving Unit	Times
02/09/2024	Falcon Centre Health Day, Loughborough, LE11	10am to 3pm
03/09/2024	Thurnby Lodge, Thurncourt Rd, LE5	10am to 12.30pm
03/09/2024	Netherhall Community Centre, Armadale Drive, LE5	1pm to 4pm
04/09/2024	Eyes Monsell Community Centre, Glen Parva LE2	10am to 12.30pm
04/09/2024	Aylestone Leisure Centre, Knighton Lane, LE2	1pm to 4pm
05/09/2024	Tesco, Hamilton, LE5	10am to 12.30pm
05/09/2024	Elizabeth Park Sport & Community Centre, LE4	1pm to 4pm
06/09/2024	The Brite Centre, LE3	10am to 12.30pm
06/09/2024	New Parks Leisure Centre, Oswald's Rd, LE3	1pm to 4pm
07/09/2024	Belgrave Neighbourhood Centre, Rothly St, LE4	10am to 4pm
09/09/2024	Syston Community Centre, Syston LE7	10am to 12.30pm
09/09/2024	East Goscote Village Hall, LE7	1pm to 4pm
10/09/2024	Belvoir Centre, Coalville, LE67	TBC
10/09/2024	Shepshed Community Centre, LE12	TBC
12/09/2024	Haymarket, Humberstone Gate (outside Primark)	9am to 3pm
16/09/2024	Spinney Hill Park, St Saviours Rd	10am to 12.30pm
16/09/2024	Wesley Hall, Hartington Rd, LE2	TBC
19/09/2024	Haymarket, Humberstone Gate (outside Primark)	9am to 3pm
20/09/2024	Christ the King, Beaumont Leys, LE1	9am to 12.30pm
20/09/2024	Mowmacre Hill Community Centre, Bewcastle Grove, LE4	1pm to 4pm
21/09/2024	Haymarket, Humberstone Gate (outside Primark)	10am to 4pm



## NOTE

- Pertussis & MMR vaccinations currently available
- Flu & RSV vaccinations available from 1<sup>st</sup> September 2024.
- COVID-19 vaccinations to be offered from 3<sup>rd</sup> October 2024.



# Approach to Addressing Childhood Vaccination & Immunisation

# Activities to Improve LLR Childhood Vaccinations & Immunisation

Areas of focus	Activities
Understand & define challenges related to vaccine uptake	<ul style="list-style-type: none"> <li>Working directly with GP practices with the lowest vaccination uptake to review current offer in order to improve vaccine uptake eg MMR Core 20, Super vaccinator capacity support, free use of roving vaccination units, bespoke CHIS support</li> <li>Working with GP practices with high vaccination uptake to capture learnings to adapt &amp; scale</li> <li>Engaging system partners to agree local vaccination targets, eg HPV strategy &amp; implementation</li> </ul>
Identification of specific target audiences	<ul style="list-style-type: none"> <li>Providing accessible vaccinations to particular communities, eg Leicester Mammamas baby cafes, pop-up vaccination clinic within a city mosque; working with CVSE groups &amp; system partners to provide a complementary offers eg Turning Point &amp; fibro scanning; BIMA health &amp; wellbeing events</li> <li>Progressing procurement of health inequalities hub provider</li> </ul>
Use behavioural insights & data to design & deliver solutions	<ul style="list-style-type: none"> <li>Addressing group-specific barriers to vaccine take-up, expanding the range of opportunistic vaccinations available from the roving units</li> <li>Provision of free transport to enable patients access vaccination offers</li> </ul>
Reviewing & evaluating existing patient pathways & touchpoints to identify potential solutions	<ul style="list-style-type: none"> <li>Evaluating existing vaccination data sources / recording to identify potential gaps &amp; barriers</li> <li>Agreeing system-wide data sources to use as a barometer to measure outputs</li> <li>Ongoing review of issues &amp; challenges</li> <li>Development of local walk-in vaccination finder to replace national booking system, as well as promotion of other vaccination clinics</li> </ul>
Comms & engagement	<ul style="list-style-type: none"> <li>Providing regular bespoke training and updates for health and social care professionals &amp; associated contacts, eg adult social care, community care providers</li> <li>Co-designing comms &amp; engagement materials/channels with delivery partners &amp; influencers eg HPV survey being developed with education leads; MMR &amp; autism leaflet with midwives</li> <li>Continual monitoring &amp; reviewing of outputs</li> <li>Instigating media opportunities to promote specific vaccination messaging</li> </ul>

# Human Papillomavirus (HPV) Vaccine

HPV Vaccination is recommended for:

- All adolescents (boys and girls) in school year 8 (usually aged 12 and 13 years)
- GBMSM up to and including 45 years of age attending specialist sexual health services and/or HIV clinics regardless of risk, sexual behaviour or disease status

Girls are eligible for vaccination up to their 25<sup>th</sup> birthday and boys in the eligible cohort (born after 1<sup>st</sup> Sept 2006) remain eligible to receive the vaccine until their 25<sup>th</sup> birthday. Boys born before 1<sup>st</sup> Sept 2006 have not been offered the vaccine as they are already benefitting from the indirect protection provided by the HPV vaccination programme.

GPs are required to provide HPV to eligible cohort (14 years to under 25 years), who missed SAIS vaccination offer.

## Issues

- Sustained inequalities in uptake by area and minority ethnic groups
- Unmet information needs among young people in schools where vaccination uptake is low, with implications for obtaining consent and vaccination uptake

## Actions

- Strategy developed and implementation plan being activated (forms part of wider LLR Cervical Cancer Elimination Strategy)
- Addressing young people's information needs
- Improving communication with parents
- Training and regular updates for all key health care and wellbeing professionals and education leads

## HPV Uptake at 24 August 2024

*(Source: CHIS 24/08/2024)*

City	51.1%
County	77.9%
Rutland	83.9%



**ENDS**

This page is intentionally left blank